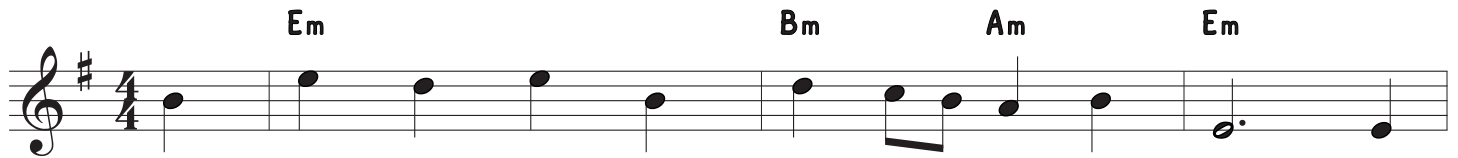


Psalm 91:9-15

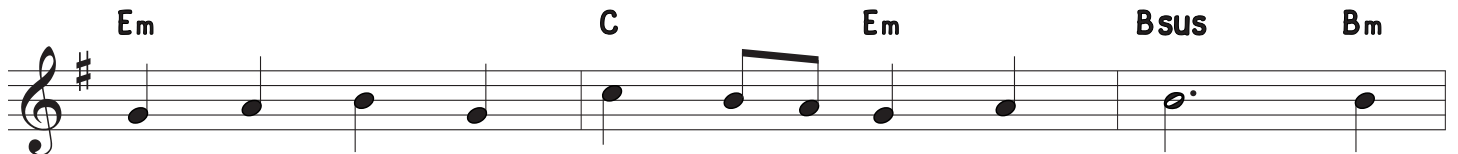
Since you have made the Lord your own abode

Paraphrase: Peter B. Irvine

PROTECTION



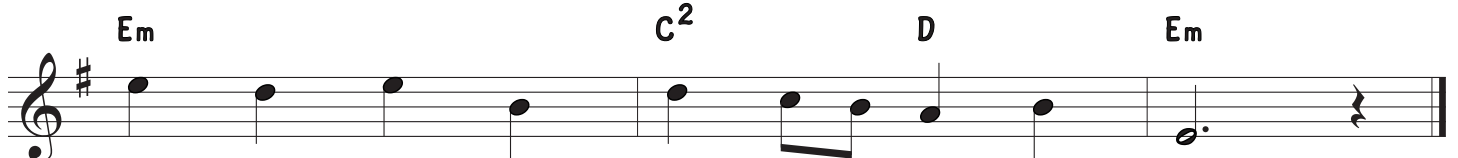
1. Since you have made the Lord your own a - bode, the
2. God's an - gels will watch e - ver__ o - ver you and
3. U - pon the li - on and the__ snake you tread, their
4. "Be - cause my child is bound to__ me in love, I



4 Most High has be - come your__ heart's true home. No
guard you well no mat - ter__ where you go. Their
lit - tle ones will fall be - neath your feet. No
will pro - tect her, for she__ knows my Name. She



7 e - vil shall come knock - ing__ at your door, and
hands will bear you up be - fore you fall and
dan - ger e - ver dares to__ cross your path. Your
calls u - pon me and I__ an - swer her. I



10 sick - ness shall leave well e - nough a - lone.
keep your feet from stum - bling on a stone.
ev - 'ry step an - ge - lic__ hands will lead.
ne - ver will let her be__ put to shame."